

Release Notes

TRIMBLE GEOSPATIAL

2 FEBRUARY 2023

TRIMBLE SURVEY GNSS FIRMWARE

Trimble Survey GNSS Firmware version 5.60/6.20 (Feb. 2023)

This firmware version includes fixes and enhancements to the Survey Receiver Firmware.

Note: For best results, users should upgrade to Trimble Access 2022.11 (2017.24 for legacy controllers) or later when using Survey GNSS Receiver Firmware version 5.60/6.20.

Supported GNSS receivers

The following table identifies the Survey GNSS receivers supported by this revision. To upgrade your receiver's firmware, a current and valid receiver warranty is required. Your warranty must cover the time period beyond the first day of the month of the "Warranty Date".

Receiver Model	Firmware Version	Warranty Date
Trimble R780	6.20	November 2020
Trimble R750 / R750MON		
Trimble R12i		
Trimble R12		
Trimble R10 Model 2		
Trimble R10 / R10 LT	5.60	November 2020
Trimble R9s		
Trimble NetR9 Geospatial		
Trimble R8s / R8s LT		
Trimble R8 Model 4, 3		
Trimble R6 Model 4, 3		
Trimble R4 Model 3, 2		
Trimble R2		

New Features and Changes

Description	Type	Supported Receiver Models
Change default data logging format from T02 to T04	Enhancement	All
Disable T04 IMU data logging during static GNSS surveys	Enhancement	Trimble R12i Trimble R780
Update iAP port defaults for communication with iOS devices	Enhancement	Trimble R12i Trimble R12
Enable repeater operation for R780 integrated 450 MHz UHF	Enhancement	Trimble R780
Support for Southern Positioning Augmentation Network (SouthPAN) Early Open Services on PRN 122	Enhancement	All receivers with SBAS support enabled
Trimble GNSS Ti-V2 Choke Ring Geodetic Antenna image	Enhancement	Trimble R750 / R750MON Trimble R9s Trimble NetR9 Geospatial
Improved Ionospheric scintillation mitigation for legacy RTK GNSS systems	Enhancement	Trimble R10 Trimble R9s Trimble NetR9 Geospatial Trimble R8s Trimble R8
Improved LTE hotspot performance	Enhancement	Trimble R750 / R750MON
Improved use of BeiDou B2a & B2b signals	Enhancement	Trimble R12i Trimble R12 Trimble R10-2 Trimble R780 Trimble R750 / R750MON
Deprecation of WEP security for receiver Wi-Fi AP	Enhancement	All receivers with integrated Wi-Fi
RTCM3 MSM support for BeiDou B1C & B2a signals	Enhancement	Trimble R12i Trimble R12 Trimble R780 Trimble R750 / R750MON
LTE IPv6 support	Enhancement	Trimble R750 / R750MON
R750MON Model 60 LTE modem error	Bug Fix	Trimble R750MON
GLN PRN without valid almanac not flagged unhealthy	Bug Fix	All receivers with GLONASS tracking enabled
QZSS & NavIC constellation identifiers not included in NMEA GSA message	Bug Fix	All receivers which support QZSS and/or NavIC (IRNSS)
NMEA GGA reports position type "float" with a Trimble CenterPoint RTX FAST solution	Bug Fix	All receivers which support Trimble RTX corrections

Note: Before updating, download and backup any data files that are on the receiver.

Trimble Installation Manager

Trimble Installation Manager is a free download and can be found here: install.trimble.com

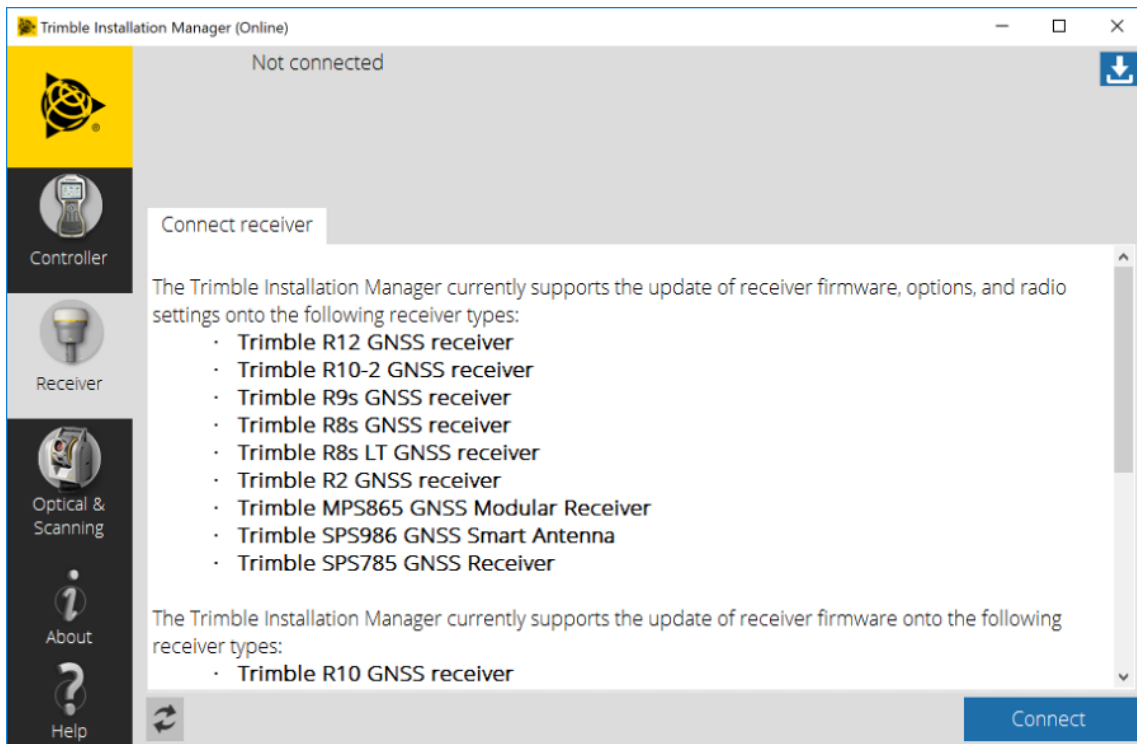
The primary Trimble Installation Manager functions for GNSS receivers are:

- Warranty Activation
- Option Loading
- Radio Configuration
- Firmware Installation

The following GNSS receivers are currently supported:

Receiver Model	Supported Functions
Trimble R2	Warranty Activation
Trimble R8s	Option Loading
Trimble R9s	Radio Configuration
Trimble R750 / R750MON	Firmware Installation
Trimble R10-2	
Trimble R12	
Trimble R12i	
Trimble R780	
Trimble R10	Firmware Installation

After installing, launch Trimble Installation Manager, connect the receiver with the appropriate data cable to your computer and click on **Connect**.



Trimble Installation Manager will display receiver-specific information. Select the firmware version you would like to install from the selection menu in the top right corner. Click on **Install** to start the installation process.

For legacy Trimble Survey GNSS receivers not supported by Trimble Installation Manager, the latest version of firmware can be downloaded (Winflash installer or *.timg file) from the [Support & Downloads for Discontinued Products](#) page on the Trimble Geospatial website.

For more information

For more information, contact your local Trimble Distribution Partner.