

## IMPROVE MOBILE WORKER PRODUCTIVITY AND REDUCE FUEL COSTS

Trimble GeoManager Fleet Management enables fleet managers to make intelligent decisions using real-time field status information. Using Trimble Field Service Management solutions, companies can improve fleet productivity using vehicle tracking and trip management tools, and reduce costs by lowering fuel use and improving asset use.

Fleet Management offers current location, diagnostics and Exception alerts to help manage overall performance for fleets of any size in a number of industries.



### KEY BENEFITS

- Increase fleet productivity using real-time location intelligence
- Decrease fuel costs by reducing unauthorized vehicle use, curbing excessive speeding and lowering idling
- Reduce vehicle component wear and tear, which lowers risk of mechanical failure by tracking maintenance
- Reduce carbon emission causing activity such as speeding, excessive idling and route deviation

"I would not want to operate my business without using the GeoManager service."

- Jerry Hellmann, President of American Furniture Rentals

"Now we can schedule more jobs in a day because Trimble MRM helps us to group them in areas that are close together."

- Nancy Dempsey, Vice President of Brennan's Heating & Air Conditioning



**INCREASE JOBS COMPLETED PER DAY AND DECREASE VEHICLE DOWNTIME**

Fleet Management helps you improve your fleet productivity by:

- Reducing unauthorized stops or vehicle use.
- Enabling direct communication with drivers and technicians.
- Increasing the amount of time vehicles are in productive use.

When using Fleet Management, your company can decrease fuel costs by reducing unauthorized vehicle use, curbing excessive speeding and idling and tracking maintenance, as well as decrease vehicle idling times by 50-90%.

Improved vehicle maintenance scheduling and performance not only reduces the amount of fuel used by your fleet, it increases the amount of time vehicles are in productive use. This increased asset utilization reduces vehicle component wear and tear, which lowers the risk of mechanical failure, increasing your company's profits even more.

**IMPROVE BUSINESS INTELLIGENCE AND REDUCE ENVIRONMENTAL IMPACT**

Using Fleet Management, you can improve your business intelligence with improved communication between dispatchers and field technicians, as well as reduce payroll and overtime costs with more accurate time-management tracking. It also reduces environmental impact by helping lower carbon emissions with trip reports detailing fuel use based on travel, idle and PTO times.

With real-time status information, Fleet Management improves overall customer satisfaction with faster and more accurate response times and better communication with customers and drivers about service call timing.

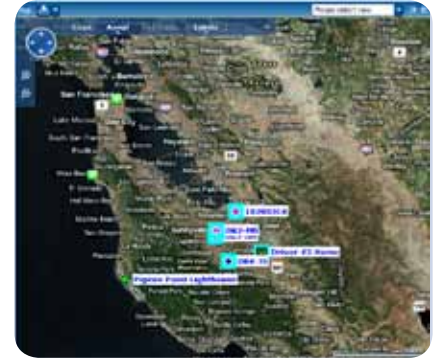
Fleet Management helps you improve your mobile workers productivity, increase your profit and decrease your company's impact on the planet.

**FEATURES**

- View the real-time status and locations of your vehicles or field technicians anywhere in the world
- Exception alerting - Includes speeding, idle time, Landmark entry/exit, stop count and duration, battery, distance driven, off-hours use
- Vehicle Diagnostics - Fuel, carbon, odometer and fault codes
- Configurable Reporting - on demand or scheduled
- Vehicle Maintenance Schedule Notifications
- Data integration to existing systems
- Messaging and Mobile Forms Driver Applications
- 24\*7 Customer Support
- On-line self paced user training

**LEARN MORE**

For more information about GeoManager Fleet Management, visit [www.trimble.com/fsm](http://www.trimble.com/fsm) or contact your Trimble sales representative at [FSMinfo@trimble.com](mailto:FSMinfo@trimble.com) or 1-877-728-7623.



Map View - Shows real-time vehicle information.

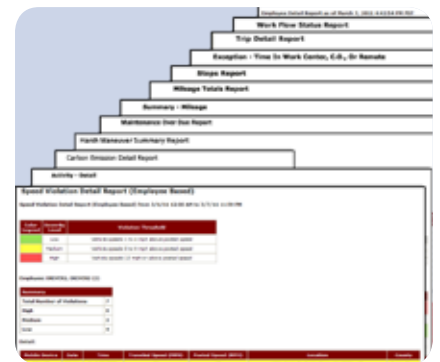
**Exceptions**

Event	Date	Vehicle	Location	Exception Type	Completion
1	March 7, 2011 11:00 AM PST	Exc-010	High Mile	High Mileage	
2	March 7, 2011 11:00 AM PST	Exc-010	Low Fuel	Low Fuel	
3	March 7, 2011 11:00 AM PST	Exc-010	High Idle	High Idle	
4	March 7, 2011 11:00 AM PST	Exc-010	Stop Count	Stop Count	
5	March 7, 2011 11:00 AM PST	Exc-010	Stop Count	Stop Count	
6	March 7, 2011 11:00 AM PST	Exc-010	Low Fuel	Low Fuel	
7	March 7, 2011 11:00 AM PST	Exc-010	Low Fuel	Low Fuel	

Exception Details

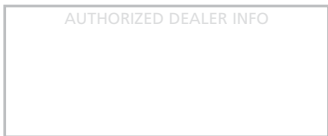
Please click any row from above to view details

Exceptions Alerts - Notifies managers when mobile workers act outside set parameters.



Reports - Allow managers to receive pertinent, timely information.

TRIMBLE Field Service Management  
 888 Tasman Drive  
 Milpitas, CA 95035  
 Tel: 1-877-728-7623  
[www.trimble.com/fsm](http://www.trimble.com/fsm)



© 2011, Trimble Navigation Limited. All rights reserved. Trimble, the Globe & Triangle logo and GeoManager are trademarks of Trimble Navigation Limited, registered in the United States Patent and Trademark Office and in other countries. All other trademarks are the property of their respective owners.

